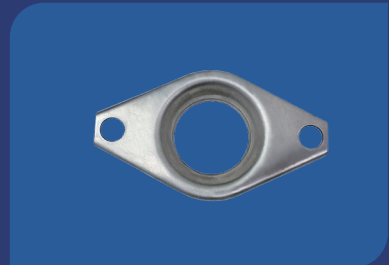
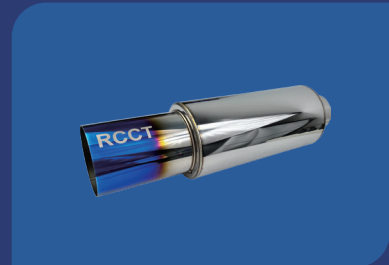
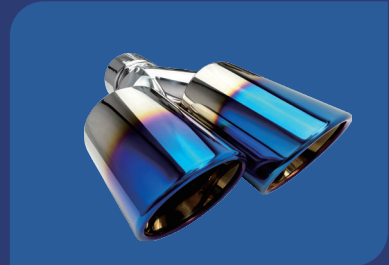




CHINA QINGDAO RELIABLE & TRUST CAR PARTS

EXHAUST PARTS/ RACING PERFORMANCE PARTS
FÁBRICA DE SILENCIADORES DE ESCAPE

USA WAREHOUSE : EL MONTE, LA

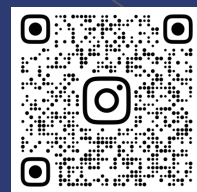


RCCT

RCCT® QINGDAO RELIABLE & TRUST CAR PARTS

China Office: Chengyang District, Qingdao, China 266000
USA Warehouse : El Monte, Los Angeles
China Tel: 0086-18561377810
USA Tel: (626) 597-5276

Web: www.ritcar.com
Facebook: Qingdao RIT Car Parts
Instagram: [ritcarparts](https://www.instagram.com/ritcarparts)
Email: ritcarparts@foxmail.com / info@ritcar.com



Order Directly Through The Website
www.ritcar.com

PLEASE SEND US AN EMAIL TO GET CHINA PORT CHEAPER PRICE.
THE PRICES SHOWN IN THE BROCHURE ARE FOR DELIVERY TO LOS ANGELES CUSTOMERS.



COMPANY DESCRIPTION

About Us:

RCCT is a renowned exhaust muffler tip factory based in Qingdao, China, specializing in manufacturing top-quality automotive components. With RCCT as your trusted partner, you gain access to a world of exceptional products and services.

Our Strengths:

Quality Excellence: RCCT is synonymous with great quality products. We take pride in delivering exhaust solutions that meet and exceed industry standards.

Innovative Design: Our development and design capabilities allow us to stay at the forefront of automotive technology, constantly innovating to meet evolving market demands.

Dedicated Team: With a team of 34 skilled workers and a dynamic sales team of 5 professionals, RCCT is committed to delivering excellence in every aspect of our business.

Global Presence:

We operate on a global scale, with a strategically located warehouse in El Monte, Los Angeles, ensuring swift and efficient deliveries to our valued North American customers. Our headquarters and office are situated in Qingdao, China, a city known for its industrial prowess.

Product Range:

RCCT offers a comprehensive range of automotive products, including:

Exhaust Mufflers/ tips: Crafted for performance and durability, esthetic and functional enhancements for exhaust systems.

Accessories: A variety of accessories to enhance exhaust functionality and appearance.

High-performance Exhaust Headers.

Expansive Facilities:

Our factory in China spans over 10,000 square feet, equipped with state-of-the-art machinery and a skilled workforce to ensure the highest standards of production.

At RCCT, we are committed to driving innovation and delivering excellence in the automotive industry. Join us in experiencing the difference in quality and performance that RCCT brings to your automotive needs.

Contact us today to explore how RCCT can elevate your automotive experience and meet your exhaust system requirements.

CONTENTS

02	•	FLEX PIPE EXHAUST
03	•	CLAMPS INCLUDING SHIPPING COST
04	•	SENSOR ACCESSORIES
04	•	EXHAUST BEZEL
04	•	ALUMINUM FUEL FITTING WELD
05	•	ACCESSORIES
06	•	GASKET
07	•	MILD STEEL ELECTROPLATED FLANGE
08	•	EXHAUST X PIPE Y PIPE
08	•	REDUCER SPECIAL
09	•	ELBOW/ BENDING PIPE
11	•	EXHAUST MUFFLER
15	•	EXHAUST TIP
18	•	EXHAUST VALVE
19	•	CATALYTIC CONVERTER TURN OFF LIGHT
19	•	OTHER PERFORMANCE



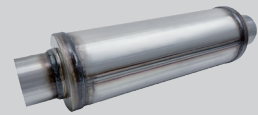
- Reduce vibration and noise, and extend the life of the exhaust muffler system.
- With excellent sealing, it can improve the vibration and noise reduction effect.
- Stainless steel double braid, durable and corrosion-resistant.

- Premium High Heat Black Powder Coat.
- Stainless Steel Construction.



- Universal Fitment for all M18x1.5 threaded sensors.
- CNC machined 304 stainless steel.

- Aluminized Steel / Stainless Steel 409.



FLEX PIPE EXHAUST

INTERLOCK



SKU	NECK	OA	QTY
AF001176L	1.75"	6"	20PCS
AF001178L	1.75"	8"	20PCS
AF001204L	2"	4"	20PCS
REC016-1	2"	6"	20PCS
AF001208L	2"	8"	20PCS
AF001224L	2.25"	4"	20PCS
REC016-2	2.25"	6"	20PCS
AF001228L	2.25"	8"	20PCS
AF001254L	2.5"	4"	20PCS
REC016-3	2.5"	6"	20PCS
AF001258L	2.5"	8"	20PCS
AF001304L	3"	4"	20PCS
REC016-4	3"	6"	20PCS
AF001308L	3"	8"	20PCS
AF001356L	3.5"	6"	20PCS
AF001358L	3.5"	8"	20PCS
REC016-6	4"	6"	20PCS
AF001408L	4"	8"	20PCS



DOUBLE BRAID

SKU	NECK	OA	QTY
AF001176B	1.75"	6"	20PCS
AF001178B	1.75"	8"	20PCS
AF001204B	2"	4"	20PCS
AF001206B	2"	6"	20PCS
AF001208B	2"	8"	20PCS
AF001224B	2.25"	4"	20PCS
AF001226B	2.25"	6"	20PCS
AF001228B	2.25"	8"	20PCS
AF001254B	2.5"	4"	20PCS
AF001256B	2.5"	6"	20PCS
AF001258B	2.5"	8"	20PCS
AF001304B	3"	4"	20PCS
AF001306B	3"	6"	20PCS
AF001308B	3"	8"	20PCS
AF001356B	3.5"	6"	20PCS
AF001358B	3.5"	8"	20PCS
AF001406B	4"	6"	20PCS
AF001408B	4"	8"	20PCS

WITH EXTENTION PIPE



SKU	NECK	OA	QTY
AF0021710	1.75"	10"	20PCS
AF0021712	1.75"	12"	20PCS
AF0022010	2"	10"	20PCS
AF0022012	2"	12"	20PCS
AF0022210	2.25"	10"	20PCS
AF0022212	2.25"	12"	20PCS
AF0022510	2.5"	10"	20PCS
AF0022512	2.5"	12"	20PCS
AF0023010	3"	10"	20PCS
AF0023012	3"	12"	20PCS

OUTER MESH INTERLOCK



SKU	NECK	OA	QTY
AF003204	2"	4"	20PCS
AF003206	2"	6"	20PCS
AF003208	2"	8"	20PCS
AF003224	2.25"	4"	20PCS
AF003226	2.25"	6"	20PCS
AF003228	2.25"	8"	20PCS
AF003254	2.5"	4"	20PCS
AF003256	2.5"	6"	20PCS
AF003258	2.5"	8"	20PCS
AF003304	3"	4"	20PCS
AF003306	3"	6"	20PCS
AF003308	3"	8"	20PCS

BELLOW SOLID DIRECTIONAL LINER



SKU	NECK	OA	MATERIAL	QTY
AF00417ST	1.75"	3"	Stainless Steel	10PCS
AF00417TI	1.75"	3"	Titanium	10PCS
AF00420ST	2"	3"	Stainless Steel	10PCS
AF00420TI	2"	3"	Titanium	10PCS
AF00422ST	2.25"	3"	Stainless Steel	10PCS
AF00422TI	2.25"	3"	Titanium	10PCS
AF00425ST	2.5"	3.5"	Stainless Steel	10PCS
AF00425TI	2.5"	3.5"	Titanium	10PCS
AF00430ST	3"	3.5"	Stainless Steel	10PCS
AF00430TI	3"	3.5"	Titanium	10PCS

CLAMPS INCLUDING SHIPPING COST

BUTT JOINT CLAMPS



SKU	SIZE	MATERIAL	QTY
AC00120	2"	Stainless Steel	20PCS
AC00122	2.25"	Stainless Steel	20PCS
AC00125	2.5"	Stainless Steel	20PCS
AC00130	3"	Stainless Steel	20PCS
AC00135	3.5"	Stainless Steel	20PCS
AC00140	4"	Stainless Steel	20PCS

EXHAUST SLEEVE CLAMPS



SKU	SIZE	QTY
AC00220	2"	10PCS
AC00222	2.25"	10PCS
AC00225	2.5"	10PCS
AC00230	3"	10PCS

U BOLT CLAMPS



SKU	SIZE	QTY
AC00317	1.75"	30PCS
AC00320	2"	30PCS
AC00322	2.25"	30PCS
AC00325	2.5"	30PCS
AC00330	3"	30PCS
AC00335	3.5"	30PCS
AC00340	4"	30PCS

T BOLT CLAMPS



SKU	SIZE	MATERIAL	QTY
AC00420	2"	Stainless Steel	30PCS
AC00422	2.25"	Stainless Steel	30PCS
AC00425	2.5"	Stainless Steel	30PCS
AC00430	3"	Stainless Steel	30PCS
AC00435	3.5"	Stainless Steel	30PCS
AC00440	4"	Stainless Steel	30PCS

ALUMINUM CLAMPS



SKU	SIZE	FLANGE	QTY
AC00520	2"	Male& F	10PCS
AC00525	2.5"	Male& F	10PCS
AC00530	3"	Male& F	10PCS
AC00535	3.5"	Male& F	10PCS

LAP JOINT CLAMPS



SKU	NECK I	NECK II	LENGTH	QTY
AC00620	2"	2.2"	75mm	10PCS
AC00622	2.25"	2.45"	75mm	10PCS
AC00625	2.5"	2.7"	75mm	10PCS
AC00630	3"	3.2"	75mm	10PCS
AC00635	3.5"	3.7"	75mm	10PCS
AC00640	4"	4.2"	75mm	10PCS

BUTT JOINT BAND CLAMP



SKU	SIZE	QTY
AC00717	1.75"	20PCS
AC00720	2"	20PCS
AC00722	2.25"	20PCS
AC00725	2.5"	20PCS
AC00730	3"	20PCS

EXHAUST BAND CLAMPS



SKU	SIZE	QTY
AC00817	1.75"	20PCS
AC00820	2"	20PCS
AC00822	2.25"	20PCS
AC00825	2.5"	20PCS
AC00827	2.75"	20PCS
AC00830	3"	20PCS
AC00835	3.5"	20PCS
AC00840	4"	20PCS

V-BAND CLAMPS



SKU	SIZE	FLANGE	QTY
AC00920Q	2"	Male& F Quick R	10PCS
AC00920N	2"	Male& F Normal	10PCS
AC00922Q	2.25"	Male& F Quick R	10PCS
AC00922N	2.25"	Male& F Normal	10PCS
AC00925Q	2.5"	Male& F Quick R	10PCS
AC00925N	2.5"	Male& F Normal	10PCS
AC00930Q	3"	Male& F Quick R	10PCS
AC00930N	3"	Male& F Normal	10PCS
AC00935Q	3.5"	Male& F Quick R	10PCS
AC00935N	3.5"	Male& F Normal	10PCS
AC00940Q	4"	Male& F Quick R	10PCS
AC00940N	4"	Male& F Normal	10PCS

SENSOR ACCESSORIES

BUNGS



SKU	STRUCTURE	PRICE
AS001A	Gurved Surface	25PCS \$30.0
AS001B	Flat Surface	25PCS \$25.0

O2 SENSOR SPACERS



SKU	SIZE	PRICE
AS002	M18×1.5	5PCS \$20.0

OXYGEN SENSOR EXTENTION SPACERS



SKU	SIZE	PRICE
AS003	M18×1.5	5PCS \$20.0

SENSOR EXTENDER SPACERS



SKU	SIZE	PRICE
AS004	M18×1.5	10PCS \$40.0

EXHAUST BEZEL



SKU	SIZE	MATERIAL	QTY
EB001SP	Single Tip Shape	Stainless Steel Polishing	5PCS
EB001SB	Single Tip Shape	Stainless Steel Black	5PCS
EB002SP	Dual Tip Shape	Stainless Steel Polishing	5PCS
EB002SB	Dual Tip Shape	Stainless Steel Black	5PCS
EB002A	Dual Tip Shape	Aluminum	5PCS

SENSOR BUNG PLUGS



SKU	STRUCTURE	PRICE
AS005A	Hexagon	50PCS \$40.0
AS005B	Sensor Hex	50PCS \$40.0

O2 SENSOR ADAPTER



SKU	SIZE	PRICE
AS006	M18×1.5	5PCS \$70.0

EXTENDER SPACERS 90 DEGREE



SKU	SIZE	PRICE
AS007	M18×1.5	5PCS \$20.0

SENSOR SPACER WITH CAT



SKU	SIZE	PRICE
AS008	M18×1.5	10PCS \$140.0

ALUMINUM FUEL FITTING WELD



SKU	SIZE
EF0016	AN6
EF0018	AN8
EF00110	AN10
EF00112	AN12
EF00116	AN16

ACCESSORIES

SABER SAW BLADE



SKU	LENGTH	PRICE
EA0016	6"	10PCS \$15.0
EA0018	8"	10PCS \$15.0

NUT WASHER KIT



SKU	NUT	PRICE
EA0025	5/16"	100PCS \$25.0
EA0023	3/8"	100PCS \$25.0

TITANIUM HEAT WRAP



SKU	LENGTH	PRICE
EA00310	10m	20PCS \$162.0
EA00315	15m(50 FT)	20PCS \$234.0

EXHAUST HANGER ROD



SKU	DEGREE	DIA	LENGH	PRICE
EA004938	90Degree	3/8"	8.0"	20PCS \$28.0
EA0049310	90Degree	3/8"	10.0"	20PCS \$35.0
EA004918	90Degree	1/2"	8.0"	20PCS \$28.0
EA0049110	90Degree	1/2"	10.0"	20PCS \$35.0
EA0044510	45Degree	5/16"	10.0"	20PCS \$36.0
EA004438	45Degree	3/8"	8.0"	20PCS \$28.0
EA0044310	45Degree	3/8"	10.0"	20PCS \$35.0
EA004418	45Degree	1/2"	8.0"	20PCS \$28.0
EA0044110	45Degree	1/2"	10.0"	20PCS \$35.0
EA004S38	Straight	3/8"	8.0"	20PCS \$32.0
EA004S18	Straight	1/2"	8.0"	20PCS \$26.0

EXHAUST STUDS



SKU	SIZE	LENGH	PRICE
EA00552	5/16" UNC	2.0"	20PCS \$26.0
EA00532	3/8" UNC	2.0"	20PCS \$26.0
EA00551	5/16" UNF	1 3/4"	20PCS \$26.0
EA00531	3/8" UNF	1 3/4"	20PCS \$26.0

BOLT SPRING KIT



SKU	PRICE
EA006	5SETS \$60.0

BOLT NUT SET



SKU	NUT	PRICE
EA0075	5/16"	50PCS \$32.0
EA0073	3/8"	50PCS \$32.0

EXHAUST RUBBER HANGER



SKU	HOLE DIST	HOLE DIA	PRICE
EA0083	3"	0.43"	2PCS \$5.0
EA0081	1.54"	0.43"	4PCS \$8.0

RUBBER HANGER O RING



SKU	OD	ID	PRICE
EA009	60mm	35mm	4PCS \$5.0

EXHAUST HANGER



SKU	DIA	LENGH	PRICE
EA0103	3/8"	10"	20PCS \$60.0
EA0101	1/2"	10"	20PCS \$60.0

PRIUS BOLT & GASKET



SKU	PRICE
EA011	10SETS \$110.0

GASKET

ASBESTOS FREE GASKET



SKU	SIZE	SHAPE	PRICE
EG00120	2"	2 Bolt	50PCS \$34.0
EG00122	2.25"	2 Bolt	50PCS \$34.0
REC011-1	2.5"	2 Bolt	50PCS \$34.0
REC011-2	3"	2 Bolt	50PCS \$40.0
EG00135	3.5"	2 Bolt	50PCS \$45.0

ASBESTOS GASKET



SKU	SIZE	SHAPE	PRICE
EG00220	2"	2 Bolt	10PCS \$10.0
EG00222	2.25"	2 Bolt	10PCS \$10.0
REC011-63	2.5"	2 Bolt	10PCS \$10.0
EG00230	3"	2 Bolt	10PCS \$10.0
EG00235	3.5"	2 Bolt	10PCS \$10.0

COPPER GASKET



SKU	SIZE	SHAPE	PRICE
EG00325	2.5"	3 Bolt	50PCS \$72.0
EG00330	3"	3 Bolt	50PCS \$72.0
EG00335	3.5"	3 Bolt	50PCS \$75.0

FULL STEEL GASKET



SKU	SIZE	SHAPE	PRICE
EG004252	2.5"	2 Bolt	50PCS \$50.0
EG004253	2.5"	3 Bolt	50PCS \$50.0
EG004302	3"	2 Bolt	50PCS \$50.0
EG004303	3"	3 Bolt	50PCS \$50.0

HONDA CIVIC HEADER DONUT



SKU	FIT	PRICE
EG005	2.5" Fit Acura Integra Honda Civic	5PCS \$20.0

ASBESTOS FREE GASKET



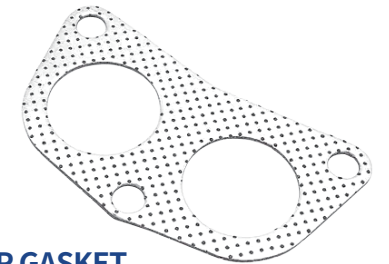
SKU	SIZE	SHAPE	PRICE
EG00620	2"	3 Bolt	50PCS \$34.0
EG00622	2.25"	3 Bolt	50PCS \$34.0
REC011-3	2.5"	3 Bolt	50PCS \$34.0
REC011-4	3"	3 Bolt	50PCS \$40.0
REC011-5	3.5"	3 Bolt	50PCS \$45.0

ASBESTOS GASKET



SKU	SIZE	SHAPE	PRICE
EG00720	2"	3 Bolt	10PCS \$10.0
EG00722	2.25"	3 Bolt	10PCS \$10.0
EG00725	2.5"	3 Bolt	10PCS \$10.0
EG00730	3"	3 Bolt	10PCS \$10.0
EG00735	3.5"	3 Bolt	10PCS \$10.0

HONDA HEADER GASKET



SKU	FIT	PRICE
EG008	Integra/ Acura D15 D16 B17 B18 B20	20PCS \$50.0

T3 T4 TURBO GASKET



SKU	FIT	PRICE
EG009A	T4 Bolt Turbo Gasket	20PCS \$50.0
EG009B	T4 Divided Turbo Gasket	20PCS \$50.0
EG009C	T3 T4 T5 Bolt Flange Gasket	20PCS \$50.0

MILD STEEL ELECTROPLATED FLANGE

2 BOLT FLANGE



SKU	SIZE	PRICE
EF00120	2"	10PCS \$50.0
EF00122	2.25"	10PCS \$50.0
EF00125	2.5"	10PCS \$50.0
EF00130	3"	10PCS \$50.0

T4 TURBO FLANGE



SKU	SIZE	PRICE
EF002	M10×1.5	20PCS \$130.0

EXHAUST COLLECTOR FLANGE



SKU	SIZE	PRICE
EF00320	2"	20PCS \$80.0
EF00322	2.25"	20PCS \$80.0
EF00325	2.5"	20PCS \$80.0

3 BOLT FLANGE



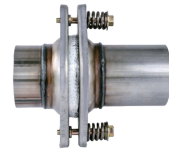
SKU	SIZE	PRICE
EF00420	2"	10PCS \$50.0
EF00422	2.25"	10PCS \$50.0
EF00425	2.5"	10PCS \$50.0
EF00430	3"	10PCS \$50.0

T4 TURBO DIVIDED FLANGE



SKU	SIZE	PRICE
EF005	M10×1.5	20PCS \$135.0

EXHAUST FLEX SPRING JOINT



SKU	DIA	LENGTH	PRICE
EF00620	2"	6"	5PCS \$80.0
EF00622	2.25"	6"	5PCS \$80.0
EF00625	2.5"	6"	5PCS \$80.0

PRIUS COROLLA FLANGE



SKU	PRICE
EF007	10PCS \$150.0

PRIUS COROLLA KIT



SKU	PRICE
EF008	10SETS \$250.0

GT45 TURBOCHARGER FLANGE 3 1/4"



SKU	PRICE
EF009	10SETS \$250.0

EXHAUST X PIPE Y PIPE REDUCER SPECIAL

409 Y PIPE



SKU	SINGLE	DUAL OUTLET	PRICE
EA0012020	2"	2"	10PCS \$120.0
EA0012222	2.25"	2.25"	10PCS \$120.0
EA0012522	2.5"	2.25"	10PCS \$120.0
EA0012525	2.5"	2.5"	10PCS \$120.0
EA0013022	3"	2.25"	10PCS \$120.0
EA0013025	3"	2.5"	10PCS \$120.0
EA0013030	3"	3"	10PCS \$120.0

409 X PIPE



SKU	INLET	OUTLET	PRICE
EA00220	2"	2"	10PCS \$150.0
EA00222	2.25"	2.25"	10PCS \$150.0
EA00225	2.5"	2.5"	10PCS \$150.0
EA00230	3"	3"	10PCS \$150.0

2 IN 1 EXHAUST Y PIPE



SKU	SINGLE	DUAL OUTLET	PRICE
EA003202	2"	2"	10PCS \$230.0
EA003222	2.25"	2.25"	10PCS \$230.0
EA003252	2.5"	2.25"	10PCS \$230.0
EA0032525	2.5"	2.5"	10PCS \$230.0
EA003302	3"	2.5"	10PCS \$230.0
EA003303	3"	3"	10PCS \$230.0
EA003404	4"	4"	10PCS \$230.0

REDUCER PIPE



SKU	DIA I	DIA II	QTY
EA0042025	2"	2.5"	20PCS
EA0042030	2"	3"	20PCS
EA0042225	2.25"	2.5"	20PCS
EA0042230	2.25"	3"	20PCS
EA0042530	2.5"	3"	20PCS
EA0042535	2.5"	3.5"	20PCS
EA0043035	3"	3.5"	20PCS

DONUT MANDREL



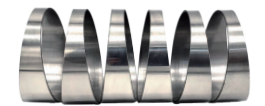
SKU	DIA	SHAPE	QTY
EA00520A	2"	Aluminum Full Round	10PCS
EA00520S	2"	Stainless Full Round	10PCS
EA00525A	2.5"	Aluminum Full Round	10PCS
EA00525S	2.5"	Stainless Full Round	10PCS
EA00530A	3"	Aluminum Full Round	10PCS
EA00530S	3"	Stainless Full Round	10PCS

QUICK RELEASE ALUMINUM



SKU	SIZE	FLANGE	QTY
EA00625	2.5"	Male& F	10PCS
EA00630	3"	Male& F	10PCS
EA00635	3.5"	Male& F	10PCS
EA00640	4"	Male& F	10PCS

90 DEGREE PIE CUT



SKU	DIA	MATERIAL	QTY
EA00720S	2"	15 Degree Stainless	10PCS
EA00720T	2"	15 Degree Titanium	10PCS
EA00725S	2.5"	15 Degree Stainless	10PCS
EA00725T	2.5"	15 Degree Titanium	10PCS
EA00730S	3"	15 Degree Stainless	10PCS
EA00730T	3"	15 Degree Titanium	10PCS

EXHAUST RAIN CAP



SKU	DIA	FIT	QTY
EA00820	2"	2" to 2-3/16"	20PCS
EA00825	2.5"	2-1/2" to 2-11/16"	20PCS
EA00830	3"	3" to 3-3/16"	20PCS
EA00835	3.5"	3-1/2" to 3-11/16"	20PCS
EA00840	4"	4" to 4-3/16"	20PCS
EA00845	4.5"	4-1/2" to 4-11/16"	20PCS
EA00850	5"	5" to 5-3/16"	20PCS

ELBOW/ BENDING PIPE

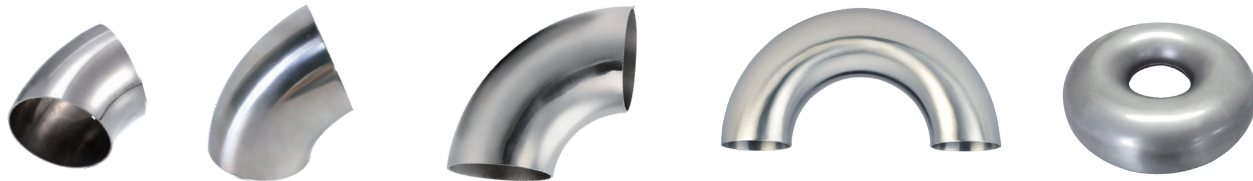
MANDREL BEND ELBOW SUS304 POLISHING 1.5MM THICKNESS

SKU	RADIUS	DIA	ANGLE
REC005-1-1	1.5D	1.5"	45Degree
REC005-2	1.5D	1.5"	60Degree
REC005-1-2	1.5D	1.5"	90Degree
REC005-4	1.5D	1.5"	180Degree
REC005-1-3	1.5D	1.5"	360Degree
REC005-1-4	1.8m	1.5"	Straight
REC005-6	1.5D	1.75"	45Degree
REC005-7	1.5D	1.75"	60Degree
REC005-8	1.5D	1.75"	90Degree
REC005-9	1.5D	1.75"	180Degree
REC005-10	1.5D	1.75"	360Degree
REC005-1-5	1.0D	2"	45Degree
REC005-12	1.5D	2"	60Degree
REC005-1-6	1.0D	2"	90Degree
REC005-14	1.5D	2"	180Degree
REC005-1-7	1.5D	2"	360Degree
REC005-1-8	1.8m	2"	Straight
REC005-1245	1.5D	2.125"	45Degree
REC005-1260	1.5D	2.125"	60Degree
REC005-1290	1.5D	2.125"	90Degree
REC005-1218	1.5D	2.125"	180Degree
REC005-1236	1.5D	2.125"	360Degree
REC005-1-9	1.3D	2.25"	45Degree

SKU	RADIUS	DIA	ANGLE
REC005-17	1.5D	2.25"	60Degree
REC005-1-10	1.3D	2.25"	90Degree
REC005-19	1.5D	2.25"	180Degree
REC005-1-11	1.5D	2.25"	360Degree
REC005-1-12	1.8m	2.25"	Straight
REC005-1-13	1.0D	2.5"	45Degree
REC005-2560	1.5D	2.5"	60Degree
REC005-1-14	1.0D	2.5"	90Degree
REC005-2518	1.5D	2.5"	180Degree
REC005-1-15	1.5D	2.5"	360Degree
REC005-1-16	1.8m	2.5"	Straight
REC005-1-17	1.0D	3"	45Degree
REC005-22	1.5D	3"	60Degree
REC005-1-18	1.0D	3"	90Degree
REC005-24	1.5D	3"	180Degree
REC005-1-19	1.5D	3"	360Degree
REC005-1-20	1.8m	3"	Straight
REC005-1-21	1.5D	3.5"	45Degree
REC005-1-22	1.5D	3.5"	90Degree
REC005-1-23	1.5D	3.5"	360Degree
REC005-1-24	1.8m	3.5"	Straight
REC005-1-25	1.5D	4"	45Degree
REC005-1-26	1.5D	4"	90Degree

MANDREAL BEND WITH LEG

SKU	DESCRIPTION	SIZE	LEG
EP002417	45Degree 1.5mm Thick	1.75"	6"
EP002420	45Degree 1.5mm Thick	2"	6"
EP002422	45Degree 1.5mm Thick	2.25"	6"
EP002425	45Degree 1.5mm Thick	2.5"	6"
EP002430	45Degree 2.0mm Thick	3"	6"
EP002435	45Degree 2.0mm Thick	3.5"	6"
EP002440	45Degree 2.0mm Thick	4"	6"
EP002917	90Degree 1.5mm Thick	1.75"	6"
EP002920	90Degree 1.5mm Thick	2"	6"
EP002922	90Degree 1.5mm Thick	2.25"	6"
EP002925	90Degree 1.5mm Thick	2.5"	6"
EP002930	90Degree 1.5mm Thick	3"	6"
EP002935	90Degree 2.0mm Thick	3.5"	6"
EP002940	90Degree 2.0mm Thick	4"	6"
EP002117	180Degree 1.8mm Thick	1.75"	8"
EP002120	180Degree 1.8mm Thick	2"	8"
EP002122	180Degree 1.8mm Thick	2.25"	8"
EP002125	180Degree 1.8mm Thick	2.5"	8"
EP002130	180Degree 1.8mm Thick	3"	8"
EP002135	180Degree 1.8mm Thick	3.5"	8"
EP002140	180Degree 1.8mm Thick	4"	8"



TUBING MANDREL BENDS ALUMINIZED MULTI-BEND MANDREL BENDS

SKU	DESCRIPTION	SIZE	MATERIAL
EP00117	U Shape Pipe 6Inch+7Inch 45Degree Leg 10Inch	1.75"	16 Gauge Aluminized
EP00120	U Shape Pipe 6Inch+7Inch 45Degree Leg 10Inch	2.0"	16 Gauge Aluminized
EP00122	U Shape Pipe 6Inch+7Inch 45Degree Leg 10Inch	2.25"	16 Gauge Aluminized
EP00125	U Shape Pipe 6Inch+7Inch 45Degree Leg 10Inch	2.5"	16 Gauge Aluminized
EP00130	U Shape Pipe 6Inch+7Inch 45Degree Leg 10Inch	3.0"	16 Gauge Aluminized



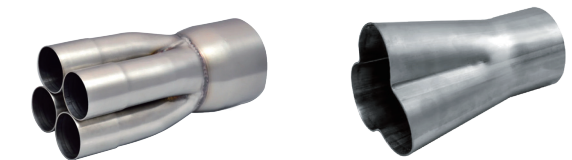
10 FEET STRAIGHT STEEL TUBE

SKU	THICKNESS	SIZE	MATERIAL
EP00317A	15 Gauge	1.75"	Aluminized
EP00320A	16 Gauge	2"	Aluminized
EP00322A	16 Gauge	2.25"	Aluminized
EP00325A	20 Gauge	2.5"	Aluminized \$34.0
EP00330A	20 Gauge	3"	Aluminized \$38.0
EP00317S	16 Gauge	1.75"	Stainless Steel
EP00320S	16 Gauge	2"	Stainless Steel
EP00322S	16 Gauge	2.25"	Stainless Steel
EP00325S	16 Gauge	2.5"	Stainless Steel
EP00330S	16 Gauge	3"	Stainless Steel



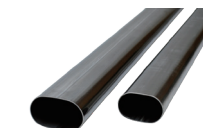
4 IN 1 MERGE COLLECTOR

SKU	LENGTH	COLLECT	INLET SLIPOVER
EP005251	8"	2.5"	1.5"
EP005302	8"	3"	2"
EP005301	8"	3"	1.75"
EP0053017	8"	3"	1 7/8"



BENT OVAL TUBING

SKU	THICKNESS	SIZE	MATERIAL
EP004	5Feet 16Gauge	3"	SS304



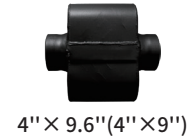
MERGE COLLEROTOR 3IN 1

SKU	LENGTH	COLLECT	INLET SLIPOVER
EP006	6"	2.5"	1.5"

EXHAUST MUFFLER

ALUMINIZED EXHAUST MUFFLER

SKU	IN& OUTLET	BODY LENGTH	BODY SHAPE
EM0282265CC	2.25"	6.5"	Center Inlet& Center Outlet
EM0282565CC	2.5"	6.5"	Center Inlet& Center Outlet
EM0283065CC	3"	6.5"	Center Inlet& Center Outlet
EM0282265OC	2.25"	6.5"	Offset Inlet& Center Outlet
EM0282565OC	2.5"	6.5"	Offset Inlet& Center Outlet
EM0282265OO	2.25"	6.5"	Offset Inlet & Offset Outlet
EM0282565OO	2.5"	6.5"	Offset Inlet& Offset Outlet
EM0283065CD	3" / 2.5"	6.5"	Center Inlet& Dual Outlet
EM0282565CD	2.5" / 2.25"	6.5"	Center Inlet& Dual Outlet
EM0282265DD	2.25"	6.5"	Dual Inlet& Dual Outlet
EM0282565DD	2.5"	6.5"	Dual Inlet& Dual Outlet
EM0282213OC	2.25"	13"	Offset Inlet& Center Outlet
EM0282513OC	2.5"	13"	Offset Inlet& Center Outlet
EM0283013OC	3"	13"	Offset Inlet& Center Outlet
EM0282213OO	2.25"	13"	Offset Inlet& Offset Outlet
EM0282513OO	2.5"	13"	Offset Inlet& Offset Outlet
EM0283013OO	3"	13"	Offset Inlet& Offset Outlet
EM0282213CO	2.25"	13"	Center Inlet& Offset Outlet
EM0282513CO	2.5"	13"	Center Inlet& Offset Outlet
EM0283013CD	3" / 2.5"	13"	Center Inlet& Dual Outlet
EM0282513CD	2.5" / 2.25"	13"	Center Inlet& Dual Outlet
EM0282513DD	2.5"	13"	Dual Inlet& Dual Outlet
EM0282213DD	2.25"	13"	Dual Inlet& Dual Outlet



K TURNED MUFFLER

SKU	IN& OUTLET	BODY DIA	BODY L
EM02120	2" / 3"	4"	10"
EM02122	2.25" / 4"	5"	12"
EM02125	2.5" / 4"	5"	12"
EM02130	3" / 4"	5"	12"



N1 MUFFLER

SKU	IN& OUTLET	BODY DIA	BODY L
EM022204	2" / 3.5"	4"	10"
EM022224	2.25" / 3.5"	4"	10"
EM022254	2.5" / 3.5"	4.5"	10"
EM02230510	3" / 4"	5"	10"
EM022225	2.25" / 4"	5"	12"
EM022255	2.5" / 4"	5"	12"
EM02230512	3" / 4"	5"	12"



SS201 POLISHING RESONATOR

SKU	IN& OUTLET	BODY DIA	BODY L
EM02320	2"	4"	10"
EM02322	2.25"	4"	10"
EM02325	2.5"	4"	10"
EM02330	3"	4"	10"



SS409 RESONATOR

SKU	IN& OUTLET	BODY DIA	BODY L
EM02422	2.25"	4"	12" \$23.0
EM02425	2.5"	4"	14" \$23.0
EM02430	3"	4"	14" \$23.0



ALUMINIZED WELDED RESONATORS

SKU	IN& OUTLET	BODY DIA	BODY L
EM02517	1.75"	3.5"	12"
EM02520	2"	3.5"	12"
EM02522	2.25"	3.5"	12"



ALUMINIZED WELDED RESONATORS

SKU	IN& OUTLET	BODY DIA	BODY L
EM02620	2"	3.5"	16"
EM02622	2.25"	3.5"	16"



L PERFORMANCE MUFFLER

SKU	IN& OUTLET	BODY DIA	BODY L
EM02725	2.5"	5"	6.5"
EM02730	3"	5"	6.5"



EXHAUST MUFFLER

DUAL RACING POWER MUFFLER



SKU	IN&OUTLET	BODY SIZE	BODY L
EM00122	2.25" / 3"	5"×9"	15"
EM00125	2.5" / 3"	5"×9"	15"
EM00130	3" / 3.5"	5"×9"	15"

DUAL RACING POWER MUFFLER



SKU	IN&OUTLET	BODY SIZE	BODY L
EM0022214	2.25"	4"×9"	14"
EM0022514	2.5"	4"×9"	14"
EM0022518	2.5"	4"×9"	18"

409 RACING POWER MUFFLER



SKU	IN&OUTLET	BODY SIZE	BODY L
EM0033025	3" Dual 2.5"	4"×9"	14"
EM0032525	2.5" Dual 2.5"	4"×9"	14"
EM0033030	3" Dual 3"	4"×9"	14"

OFFSET & OFFSET



SKU	IN&OUTLET	BODY SIZE	BODY L
EM00420	2"	4"×9"	14"
EM00422	2.25"	4"×9"	14"
EM00425	2.5"	4"×9"	14"
EM00430	3"	4"×9"	14"

OFFSET & CENTER OUTLET



SKU	IN&OUTLET	BODY SIZE	BODY L
EM00520	2"	4"×9"	14"
EM00522	2.25"	4"×9"	14"
EM00525	2.5"	4"×9"	14"
EM00530	3"	4"×9"	14"

SINGLE RACING POWER MUFFLER



SKU	IN&OUTLET	BODY SIZE	BODY L
EM00622	2.25" / 3"	5"×9"	15"
EM00625	2.5" / 3"	5"×9"	15"
EM00630	3" / 3.5"	5"×9"	15"

MUGEN LOOP S-FLOW MUFFLER



SKU	IN&OUTLET	BODY DIA	BODY L
EM00720	2" / 3.5"	8"	10"
EM00722	2.25" / 3.5"	8"	10"
EM00725	2.5" / 3.5"	8"	10"

OVAL 201 RESONATOR



SKU	IN&OUTLET	BODY SIZE	BODY L
EM00822	2.25"	4"×9"	10"
EM00825	2.5"	4"×9"	10"
EM00830	3"	4"×9"	10"

DUAL RACING SPORT



SKU	IN&OUTLET	BODY SIZE	BODY L
EM00922	2.25" / 3"	5"×10"	14"
EM00925	2.5" / 3"	5"×10"	14"
EM00930	3" / 3"	5"×10"	14"

WIDE EURO OVAL MUFFLER



SKU	IN& OUTLET (70mm×140mm)	BODY SIZE	BODY L
RMT010-2.25	2.25"	5"×8"	12"
RMT010-2.5	2.5"	5"×8"	12"
RMT010-3.0	3"	5"×8"	12"

ALUMINIZED GLASS PACK OFFSET & OFFSET



SKU	IN&OUTLET	BODY DIA	BODY L
EM0111716	1.75"	6"	16"
EM0112018	2"	6"	18"
EM0112024	2"	6"	24"
EM0112218	2.25"	6"	18"
EM0112224	2.25"	6"	24"
EM0112524	2.5"	6"	24"
EM0113024	3"	7"	24"

CENTER & OFFSET



SKU	IN&OUTLET	BODY SIZE	BODY L
EM01222	2.25"	4"×9"	14"
EM01225	2.5"	4"×9"	14"
EM01230	3"	4"×9"	14"

CENTER & OFFSET



SKU	IN&OUTLET	BODY SIZE	BODY L
EM01322	2.25"	4"×9"	9"
EM01325	2.5"	4"×9"	9"
EM01330	3"	4"×9"	9"

OFFSET & CENTER



SKU	IN&OUTLET	BODY SIZE	BODY L
EM01422	2.25"	4"×9"	14"
EM01425	2.5"	4"×9"	14"
EM01430	3"	4"×9"	14"

CENTER & CENTER



SKU	IN&OUTLET	BODY SIZE	BODY L
EM01522	2.25"	4"×9"	9"
EM01525	2.5"	4"×9"	9"
EM01530	3"	4"×9"	9"

ONE INLET & DUAL OUTLET



SKU	IN&OUTLET	BODY SIZE	BODY L
EM0162520	2.5" / 2"	4"×9"	18"
EM0162525	2.5" / 2.5"	4"×9"	18"
EM0163025	3" / 2.5"	4"×9"	18"
EM0163022	3" / 2.25"	4"×9"	18"

CENTER & CENTER OVAL MUFFLER



SKU	IN&OUTLET	BODY SIZE	BODY L
EM01722	2.25"	4"×9"	12"
EM01725	2.5"	4"×9"	12"
EM01730	3"	4"×9"	14"

DUAL ALUMINIZED QUIET



SKU	IN&OUTLET	BODY SIZE	BODY L
EM0182520	2.5" / 2"	4.5"×8.5"	14"
EM0182522	2.5" / 2.25"	4.5"×8.5"	14"
EM0182525	2.5" / 2.5"	4.5"×8.5"	14"
EM0183022	3" / 2.25"	4.5"×8.5"	14"
EM0183025	3" / 2.5"	4.5"×8.5"	14"

ALUMINIZED QUIET OVAL OFFSET & CENTER OUTLET



SKU	IN&OUTLET	BODY SIZE	BODY L
EM01920	2"	4"×9"	14"
EM01922	2.25"	4"×9"	14"
EM01925	2.5"	4"×9"	14"
EM01930	3"	4"×9"	14"

ALUMINIZED QUIET OVAL OFFSET & OFFSET



SKU	IN&OUTLET	BODY SIZE	BODY L
EM02025	2.5"	4"×9"	18"
EM02030	3"	4"×9"	18"

EXHAUST TIP

BLACK PAINT TIP ROLLED EDGE



SKU	IN&OUTLET	OVERALL
ET001203	2"/3.5"	200mm
ET001223	2.25"/3.5"	300mm
ET00125412	2.5"/4"	12"

OVAL TAIL PIPE



SKU	IN&OUTLET	OVERALL
ET00225	2.5"/5.5"×3"	8"

RCCT GRID DUAL EXHAUST TIP



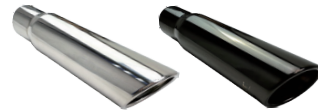
SKU	IN&OUTLET	OVERALL
ET003254	2.5"/4"	10"

DUAL CARBON FIBER



SKU	IN&OUTLET	SURFACE	OVERALL
ET00420P	2"/3.5"	Polishing	240mm
ET00422P	2.25"/3.5"	Polishing	240mm
ET00425B	2.5"/4"	Blue	240mm
ET00425BL	2.5"/4"	Black Chrome	240mm
ET00430P	3"/4"	Polishing	240mm

ROLLED ANGLE TIP



SKU	IN&OUTLET	SURFACE	OVERALL
ET00522P	2.25"/3"	Polishing	12"
ET00525P	2.5"/3"	Polishing	12"
ET00525BL	2.5"/3"	Black Chrome	12"
ET00530P	3"/4"	Polishing	12"
ET0053018P	3"/4"	Polishing	18"

CARBON FIBER TIP



SKU	IN&OUTLET	SURFACE	OVERALL
ET00620P	2"/3.5"	Polishing	160mm
ET00622P	2.25"/3.5"	Polishing	160mm
ET00625B	2.5"/4"	Blue	160mm
ET00625BL	2.5"/4"	Black Chrome	160mm
ET006255BL	2.5"/5"	Black Chrome	175mm
ET00630P	3"/4"	Polishing	160mm

PERFORATIONS EXHAUST TIP



SKU	IN&OUTLET	OVERALL
ET00720	2"/3.5"	160mm
ET00725	2.5"/4"	160mm
ET00730	3"/4"	160mm

ROUND EDGE CARBON FIBER



SKU	IN&OUTLET	OVERALL
ET00820	2"/3.5"	160mm
ET00822	2.25"/3.5"	160mm
ET00825	2.5"/4"	160mm
ET00830	3"/4"	160mm

DUAL CUT ANGLE



SKU	IN&OUTLET	SURFACE	OVERALL
ET00925P	2.5"/4"	Polishing	12"
ET00925BL	2.5"/4"	Black Chrome	12"
ET00930P	3"/4"	Polishing	12"
ET00930BL	3"/4"	Black Chrome	12"

EQUAL DUAL TIP



SKU	IN&OUTLET	SURFACE	OVERALL
ET01020P	2"/3.5"	Polishing	10"
ET01020B	2"/3.5"	Blue	10"
ET01020BL	2"/3.5"	Black Chrome	10"
ET01022P	2.25"/3.5"	Polishing	10"
ET01022B	2.25"/3.5"	Blue	10"
ET01022BL	2.25"/3.5"	Black Chrome	10"
ET01025P	2.5"/4"	Polishing	10"
ET01025B	2.5"/4"	Blue	10"
ET01025BL	2.5"/4"	Black Chrome	10"
ET0102510B	2.5"/3.5"	Blue	10"
ET0102510BL	2.5"/3.5"	Black Chrome	10"
ET01030P	3"/4"	Polishing	12"
ET01030B	3"/4"	Blue	12"
ET01030BL	3"/4"	Black Chrome	12"
ET0103010B	3"/4"	Blue	10"
ET0103010BL	3"/4"	Black Chrome	10"

ANGLE CUT 45° TIP



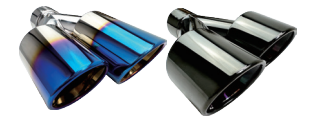
SKU	IN&OUTLET	SURFACE	OVERALL
ET0112218P	2.25"/3.5"	Polishing	18"
ET0112512P	2.5"/3.5"	Polishing	12"
ET0112518P	2.5"/3.5"	Polishing	18"
ET0112518BL	2.5"/3.5"	Black Chrome	18"

HOT PETAL CARBON FIBER TIP



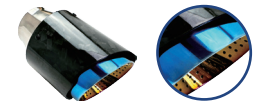
SKU	IN&OUTLET	SHAPE	OVERALL
ET01325	2.5"/4"	Petal	170mm

DIFFERENT LENGTH TIP



SKU	IN&OUTLET	SURFACE	OVERALL
ET01220P	2"/3.5"	Polishing	10"
ET01222P	2.25"/3.5"	Polishing	10"
ET01225P	2.5"/4"	Polishing	12"
ET0122510P	2.5"/4"	Polishing	10"
ET0122510B	2.5"/4"	Blue	10"
ET0122510BL	2.5"/4"	Black Chrome	10"
ET01230B	3"/4"	Blue	12"
ET01230BL	3"/4"	Black Chrome	12"

FORGED CARBON FIBER EXHAUST TIP



SKU	IN&OUTLET	SURFACE	OVERALL
ET01425B	2.5"/4"	Blue	160mm
ET01425BL	2.5"/4"	Black Chrome	160mm

DOUBLE WALL TIP



SKU	IN&OUTLET	SURFACE	OVERALL
ET01522P	2.25"/3"	Polishing	12"
ET01525P	2.5"/3"	Polishing	12"
ET015254P	2.5"/4"	Polishing	12"
ET015254BL	2.5"/4"	Black Chrome	12"
ET0152548P	2.5"/4"	Polishing	8"
ET015255P	2.5"/5"	Polishing	10"
ET015255BL	2.5"/5"	Blue	10"
ET01530P	3"/4"	Polishing	12"
ET01530B	3"/4"	Blue	12"
ET01530BL	3"/4"	Black Chrome	12"
ET0153010P	3"/4"	Black Chrome	10"
ET015206P	2"/3.5"	Polishing	160mm
ET015226P	2.25"/3.5"	Polishing	160mm
ET0152546P	2.5"/4"	Polishing	200mm
ET0152546B	2.5"/4"	Blue	200mm
ET0152546BL	2.5"/4"	Black Chrome	200mm

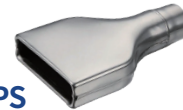
EXHAUST TIP

TURN DOWN EXHAUST TIP



SKU	IN&OUTLET	OVERALL	QTY
ET01620	2"/2.25"	9"	10PCS
ET01622	2.25"/2.5"	9"	10PCS
ET01625	2.5"/3"	9"	10PCS
ET01630	3"/3"	12"	10PCS
ET01635	3.5"/3.5"	15"	10PCS

SQUARE SLANT CUT EXHAUST TIPS



SKU	IN	OUTLET	OVERALL
ET01722	2.25"	2"×6"	10"
ET01725	2.5"	2"×6"	10"

SQUARE SLANT CUT EXHAUST TIPS



SKU	IN	OUTLET	OVERALL
ET01822	2.25"	2"×6"	10"
ET01825	2.5"	2"×6"	10"

REAR EXHAUST PIPE TIP



SKU	IN	OUTLET	OVERALL
ET019	62-64mm	60mm×80mm	148mm

DUAL TURN UP TIP



SKU	IN&OUTLET	OVERALL	QTY
ET02222	2.25"/3"	12"	10PCS
ET02225	2.5"/3"	12"	10PCS

TRIPLE EXHAUST TIP



SKU	IN&OUTLET	OVERALL	QTY
ET02325	2.5"/3.5"	12"	10PCS
ET02330	3"/3.5"	12"	10PCS

BMW M SERIOUS TIP



SKU	IN&OUTLET	OVERALL	QTY
ET02425	2.5"/3.5"	120mm	10PCS
ET02427	2.75"/3.5"	120mm	10PCS

3IN SRT/CHARGER TIP



SKU	IN	OUTLET	OVERALL
ET02530	3"	5"	7"

EXHAUST DOWNPIPES

FOR RACING CAR ONLY.(NOT PUBILC ROAD IN LA)



SKU	SIZE
ED001A	S55 2015 - 2019 BMW F80 M3, F82 M4 & M2/ F87
ED001B	2020 - 2023 S58 BMW M3/ M4 G80/G82/ G83
ED001C	B58 Engine M240i/340i/440i/540i/740i/840i & xDrive
ED001D	Downpipes Fits BMW S63 2011~ 2018 BMW F10 M5 & F12 M6/ F06 M6

EXHAUST VALVE



20IN VACUUM MUFFLER VALVE

SKU	IN&OUTLET	BODY LENGTH	BODY SIZE
EV00130	3"	190mm×280mm	20"
EV00135	3.5"	190mm×280mm	20"
EV00140	4"	190mm×280mm	20"

VACUUM PUMP CONTROLLER BOX

SKU
EV003



ELECTRIC EXHAUST CUTOUT

SKU	SIZE
EV00425	2.5"
EV00430	3"

ELECTRIC EXHAUST CONTROL VALVE

SKU	SIZE
EV00520	2"
EV00522	2.25"
EV00525	2.5"
EV00530	3"



VACUUM PUMP EXHAUST VALVE KIT

SKU	SIZE
EV00620	2"
EV00622	2.25"
EV00625	2.5"
EV00630	3"

NORMALLY VACUUM PRESSURE EXHAUST CUTOUT VALVE

SKU	SIZE
EV00720	2"
EV00722	2.25"
EV00725	2.5"
REV010-1	3"
REV010-2	3.5"
REV010-3	4"



ELECTRIC EXHAUST VALVE KIT

SKU	SIZE
EV00822	2.25"
EV00825	2.5"
EV00830	3"

DUAL OUTLET MUFFLER VALVE

SKU	SIZE
EV00925	2.5"
EV00930	3"
EV00935	3.5"



MUFFLER VALVE

SKU	IN&OUTLET	BODY LENGTH	BODY SIZE
EV00220	2"	140mm×220mm	260mm
EV00225	2.5"	140mm×220mm	260mm
EV00230	3"	140mm×220mm	260mm



ELECTRONIC EXHAUST REMOTE CONTROL SWITCH

SKU
EV010



EXHAUST DOWNPIPE E-CUTOUT

SKU	SIZE
EV01120	2"
EV01122	2.25"
EV01125	2.5"
EV01130	3"

ELECTRIC EXHAUST CONTROL VALVE

SKU	SIZE
EV01225	2.5"
EV01230	3"



VACUUM PUMP VARIABLE VALVE MUFFLERS

SKU	SIZE
EV01330	Inlet 3" Dual 2.5"
EV01325	Inlet 2.5" Dual 2.5"



ELECTRIC EXHAUST VALVE FLAPPER

SKU	SIZE
EV01422	2.25"
EV01425	2.5"
EV01430	3"
EV01435	3.5"



DUAL ELECTRIC EXHAUST VALVE

SKU	SIZE
EV01525	2.5"
EV01530	3"

ELECTRONIC EXHAUST VALVE

SKU	SIZE
EV01620	2"
EV01622	2.25"
EV01625	2.5"
EV01630	3"



CATALYTIC CONVERTER TURN OFF LIGHT



ROUND WITH SHIELD

SKU	IN&OUTLET	CORE	CORE
EC00120	2" / 2"	120×80×150mm	Ceramic Carrier
EC00122	2.25" / 2.25"	120×80×150mm	Ceramic Carrier
EC00125	2.5" / 2.5"	120×80×150mm	Ceramic Carrier



SQUARE WITH HEATSHIELD

SKU	IN&OUTLET	CORE	CORE
EC00220	2" / 2"	4.7"×3.1"	Ceramic Carrier
EC00222	2.25" / 2.25"	4.7"×3.1"	Ceramic Carrier
EC00225	2.5" / 2.5"	4.7"×3.1"	Ceramic Carrier



ROUND CATALYTIC TURN OFF LIGHT

SKU	IN&OUTLET	CORE	CORE
EC00320	2" / 2"	4.5" Dia×6"	Ceramic
RAF019-3-2	2.25" / 2.25"	4.5" Dia×6"	Ceramic
RAF019-3-3	2.5" / 2.5"	4.5" Dia×6"	Ceramic
RAF019-3-4	3" / 3"	4.5" Dia×6"	Ceramic
EC00322	2.25" / 2.25"	101×101 mm	High F Metal
EC00325	2.5" / 2.5"	101×101 mm	High F Metal



TIAL BOV BLOW OFF VALVE

SKU	COLOR
OP010R	Red
OP010B	Black



ALUMINUM HEAT SHIELD

SKU	FITTING
OP006A	500*800*0.5mm
OP006B	500*1220*0.5mm

OTHER PERFORMANCE



AIR FILTER ELEMENT

SKU	NECK DIA	BODY DIAMETER	COLOR
OP00125	2.5"	152mm	Red Woven Cotton
OP00130	3"	152mm	Red Woven Cotton
OP00135	3.5"	152mm	Red Woven Cotton
OP00140	4"	152mm	Red Woven Cotton
OP00145	4.5"	152mm	Red Woven Cotton
OP00150	5"	200mm	Red Woven Cotton
OP00155	5.5"	200mm	Red Woven Cotton
OP00160	6"	200mm	Red Woven Cotton



MINI HIGH FLOW AIR FILTER

SKU	NECK DIA	BODY DIAMETER	COLOR
OP0029	9mm	50mm	Black
OP00212	12mm	50mm	Black
OP00218	18mm	50mm	Black
OP00225	25mm	50mm	Black



ALUMINUM FUEL OIL TANK

SKU	SIZE	FITTING	DESCRIPTION
OP0035	5Gallon	10AN	Aluminum
OP00310	10Gallon	10AN	Aluminum
OP00315	15Gallon	10AN	Aluminum
OP00320	20Gallon	10AN	Aluminum



UNIVERSAL OIL COOLERS

SKU	SIZE	FITTING	DESCRIPTION
OP00413	13Row	10AN Male Threads	Silver Color
OP00416	16Row	10AN Male Threads	Silver Color
OP00419	19Row	10AN Male Threads	Silver Color
OP00425	25Row	10AN Male Threads	Silver Color



BRAIDED FUEL LINE HOSE NYLON BRAIDED

SKU	NECK DIA	LENGTH	MAX W.PRESSURES
OP0056	6AN	10Feet Length	1,000PSI (70 Bar)
OP0058	8AN	10Feet Length	1,000PSI (70 Bar)
OP00510	10AN	10Feet Length	890PSI (60 Bar)
OP00512	12AN	10Feet Length	890PSI (60 Bar)
OP00516	16AN	10Feet Length	750PSI (50 Bar)

BLACK SILICONE HOSE

THICKNESS , 3/16"
LENGTH , 3"

SKU	BORE	DEGREE
OP00816ST	5/8"	Straight Tub
OP0081645	5/8"	45Degree
OP0081690	5/8"	90Degree
OP00825ST	1"	Straight Tub
OP0082545	1"	45Degree
OP0082590	1"	90Degree
OP00830ST	1 3/16"	Straight Tub
OP0083045	1 3/16"	45Degree
OP0083090	1 3/16"	90Degree
OP00835ST	1 3/8"	Straight Tub
OP0083545	1 3/8"	45Degree
OP0083590	1 3/8"	90Degree
OP00840ST	1 9/16"	Straight Tub
OP0084045	1 9/16"	45Degree
OP0084090	1 9/16"	90Degree
OP00845ST	1 3/4"	Straight Tub
OP0084545	1 3/4"	45Degree
OP0084590	1 3/4"	90Degree
OP00850ST	2"	Straight Tub
OP0085045	2"	45Degree
OP0085090	2"	90Degree
OP00855ST	2 3/16"	Straight Tub
OP0085545	2 3/16"	45Degree
OP0085590	2 3/16"	90Degree
OP00860ST	2 3/8"	Straight Tub
OP0086045	2 3/8"	45Degree
OP0086090	2 3/8"	90Degree
OP00865ST	2 9/16"	Straight Tub
OP0086545	2 9/16"	45Degree
OP0086590	2 9/16"	90Degree
OP00870ST	2 3/4"	Straight Tub
OP0087045	2 3/4"	45Degree
OP0087090	2 3/4"	90Degree
OP00875ST	3"	Straight Tub
OP0087545	3"	45Degree
OP0087590	3"	90Degree

REDUCER SILICONE HOSE

LAYERS , 4mm
WALL , 5mm
LENGTH , 3"

SKU	BORE	DEGREE
OP0091512ST	1 1/2"-1 1/4"	Straight Tub
OP009151245	1 1/2"-1 1/4"	45Degree
OP009151290	1 1/2"-1 1/4"	90Degree
OP0092220ST	2 1/4"-2 "	Straight Tub
OP009222045	2 1/4"-2 "	45Degree
OP009222090	2 1/4"-2 "	90Degree
OP0092520ST	2 1/2"-2"	Straight Tub
OP009252045	2 1/2"-2"	45Degree
OP009252090	2 1/2"-2"	90Degree
OP0092522ST	2 1/2 "-2 1/4"	Straight Tub
OP009252245	2 1/2 "-2 1/4"	45Degree
OP009252290	2 1/2 "-2 1/4"	90Degree
OP0093022ST	3"-2 1/4 "	Straight Tub
OP009302245	3"-2 1/4 "	45Degree
OP009302290	3"-2 1/4 "	90Degree
OP0092725ST	2 3/4"-2 1/2"	Straight Tub
OP009272545	2 3/4"-2 1/2"	45Degree
OP009272590	2 3/4"-2 1/2"	90Degree
OP0093025ST	3"-2 1/2"	Straight Tub
OP009302545	3"-2 1/2"	45Degree
OP009302590	3"-2 1/2"	90Degree
OP0093027ST	3"-2 3/4"	Straight Tub
OP009302745	3"-2 3/4"	45Degree
OP009302790	3"-2 3/4"	90Degree
OP0093530ST	3 1/2"-3"	Straight Tub
OP009353045	3 1/2"-3"	45Degree
OP009353090	3 1/2"-3"	90Degree



OIL CATCH CANS

SKU	CAPACITY	DESCRIPTION	COLOR
OP0073	300ml	With Filter	Black Color
OP0076	600ml	Without Filter	Black Color

